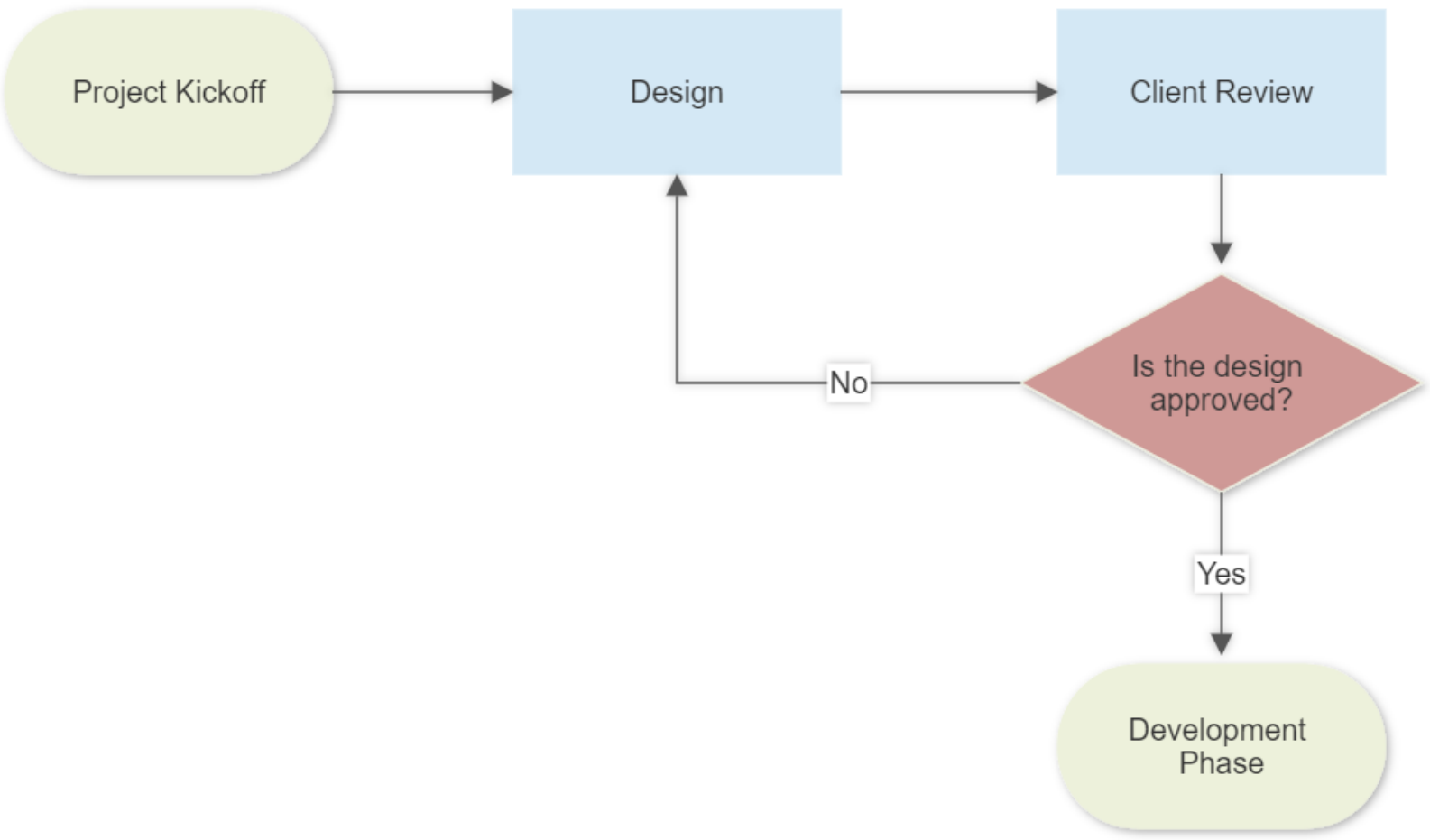
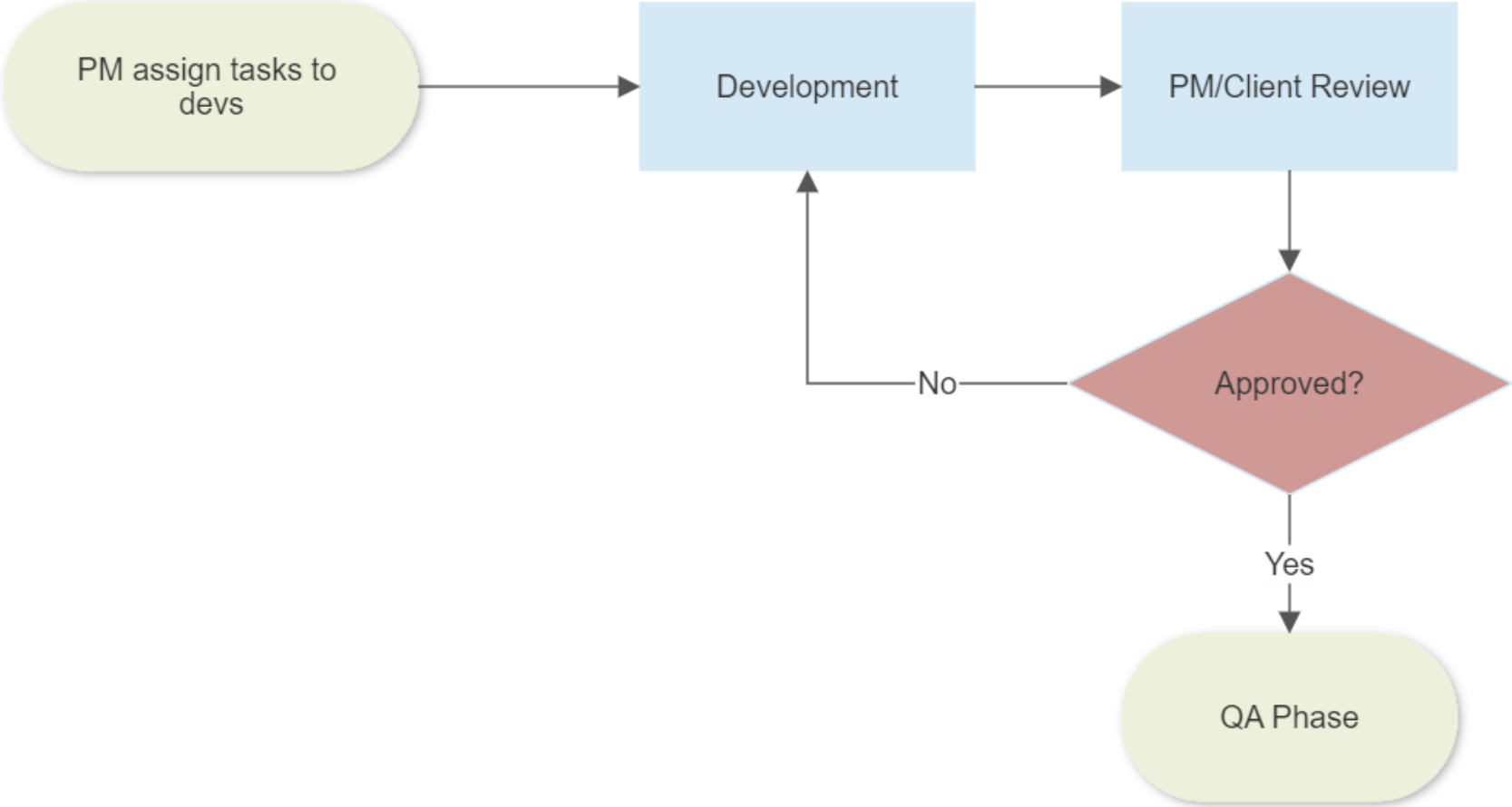


Project Process

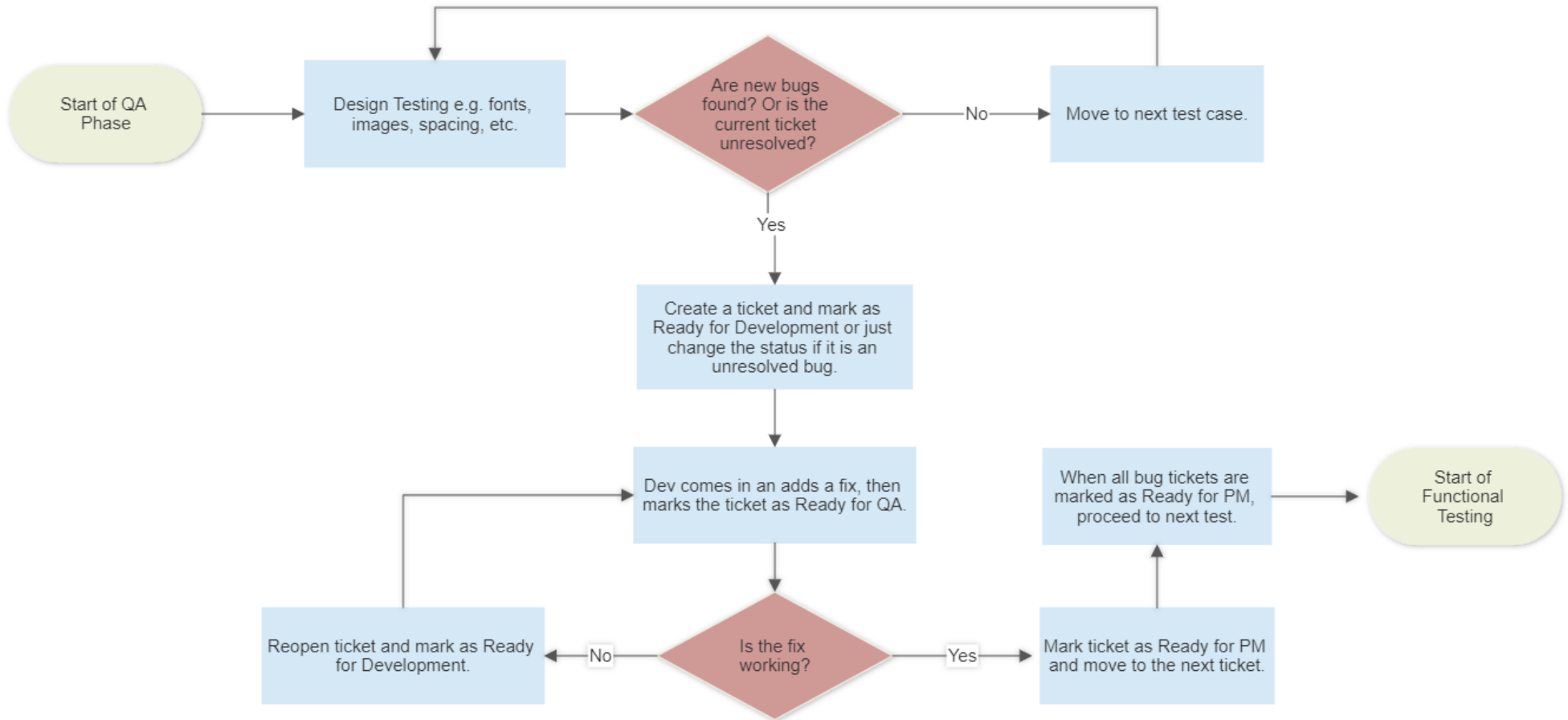


Development Phase



During the QA Phase:

There must be two types of testing in the QA phase: **Design Testing** and **Functional Testing**. It is imperative that no code is pushed during Functional Testing. The current process where every bug ticket is worked on as soon as it is logged is not ideal during Functional Testing. This is because this process tends to introduce new bugs or reintroduce previous bugs. For example, fixing a cart drawer bug when functional testing is still ongoing in the cart page, checkout, or product page.



Start of Functional Testing:

